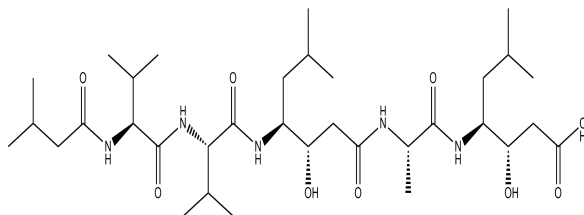


**PRODUCT: Pepstatin A**

CATALOG #: 1732-25, 100

AMOUNT: 25 mg, 100 mg

STRUCTURE:



ALTERNATE NAME: Isovaleryl-L-Val-L-Val-L-Sta-L-Ala-L-Sta-OH

MOLECULAR FORMULA: C<sub>34</sub>H<sub>63</sub>N<sub>5</sub>O<sub>9</sub>

MOLECULAR WEIGHT: 685.89

CAS#: 26305-03-3

APPEARANCE: White solid

SOLUBILITY: DMSO or MeOH

PURITY: ≥90% by HPLC

STORAGE: Store at +4°C

**DESCRIPTION:** An inhibitor of acid proteases (aspartyl peptidases), e.g. pepsin, rennin, and cathepsin D. The inhibitor is highly selective and does not inhibit thiol proteases, neutral proteases, or serine proteases

**REFERENCE:** Umezawa, H., *et al.* (1977). *Acta Biol. Med. Germ.* **36**, 1899; Umezawa, H., *et al.* (1970). *J. Antibiot.* **23**, 259 and 263.

**HANDLING:** Do not take internally. Wear gloves and mask when handling the product! Avoid contact by all modes of exposure.

**USAGE:** **FOR RESEARCH USE ONLY! Not to be used in humans**

**RELATED PRODUCTS:**

- AEBSF, HCl (Cat. No. 1644-200, 1G)
- Aprotinin (Cat. No. 4690-5, 100, 1000)
- EZBlock™ Protease Inhibitor Cocktail EDTA-Free (Cat. No. K272-1ML, 5ML, 1EA)
- Leupeptin, Hemisulfate (Cat. No. 1648-25, 50, 100)
- PMSF (Cat. No. 1548-5)
- Protease Inhibitor Cocktail (Cat. No. K271-500)